

Pull-Tight Plastic Cable Seal

MODEL NUMBER: OS6105



Seal Classification

- [] Security Seal
- [] Tensile strength > 225kgs

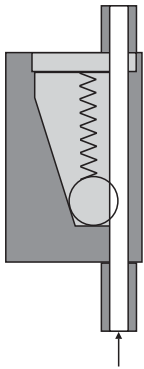
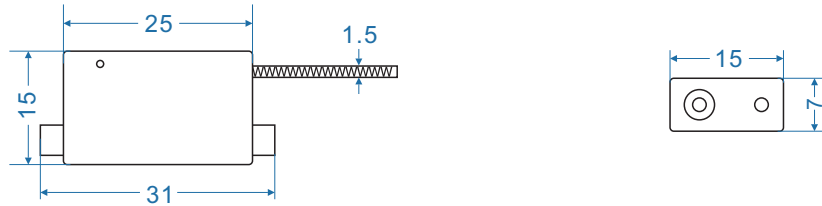
Material

- [] The lock housing is **ZINC** and covered with ABS
- [] The wire is NPC galvanized cable
- [] The standard wire is 1.5*300mm



Pull-Tight Plastic Cable Seal

MODEL NUMBER: OS6105



Lock structure

The lock housing is made with zinc.

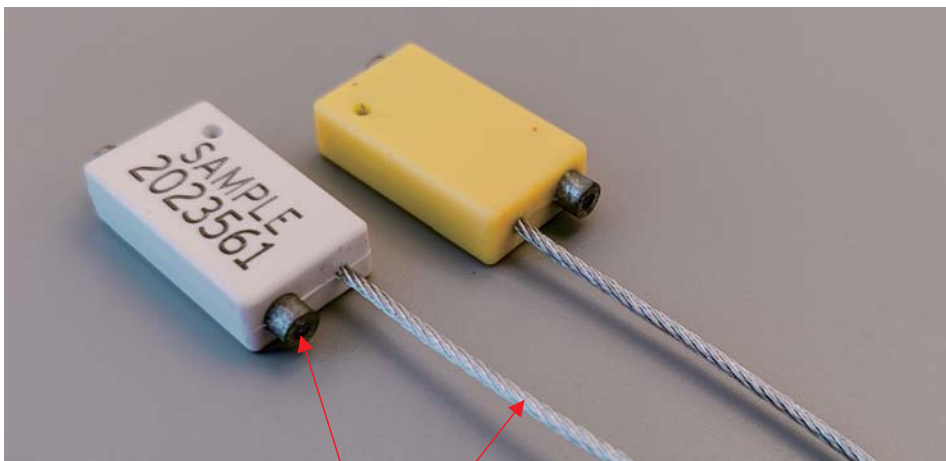
The lock mechanism is wheel.

The wire tube: 1.7mm

The wire diameter: 1.5mm

Impossible to put the pin into the tube to push the wheel

The wire can not be twistd



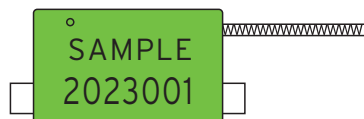
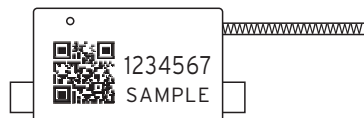
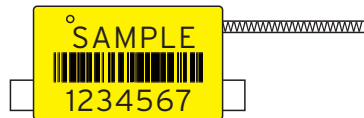
The tube is just for 1.5mm wire



Pull-Tight Plastic Cable Seal

MODEL NUMBER: OS6105

Printing by laser engraving on any colors:
if the seals is light color,the printing is in black
if the seals is dark color,the printing is in white.
in any case the printing is clear.

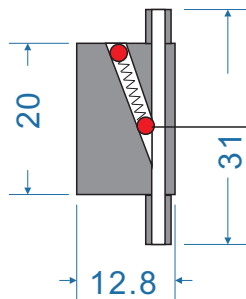


Pull-Tight Plastic Cable Seal

MODEL NUMBER: OS6105

Compare the structure

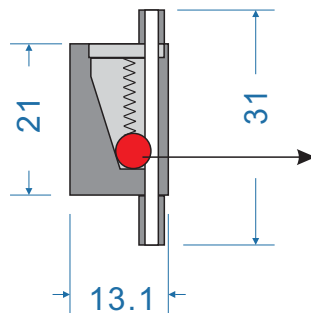
This is defective structure in the market



The lock mechanism is a **Ball**.

The defect is :

- 1)the tensile strength is less than 150kgs. The wire is not broken.
- 2)the wire can be twisted right and left. and then take the wire out.
- 3)the wire is hard to go through the hole.



The lock mechanism is a **Disco**

The advantage is :

- 1)the tensile strength is more than 180kgs
- 2)the wire can go through well.
- 3)the wire can NOT be twisted.
- 4)The wire can NOT be took out.



Pull-Tight Plastic Cable Seal

MODEL NUMBER: OS6105



Printing

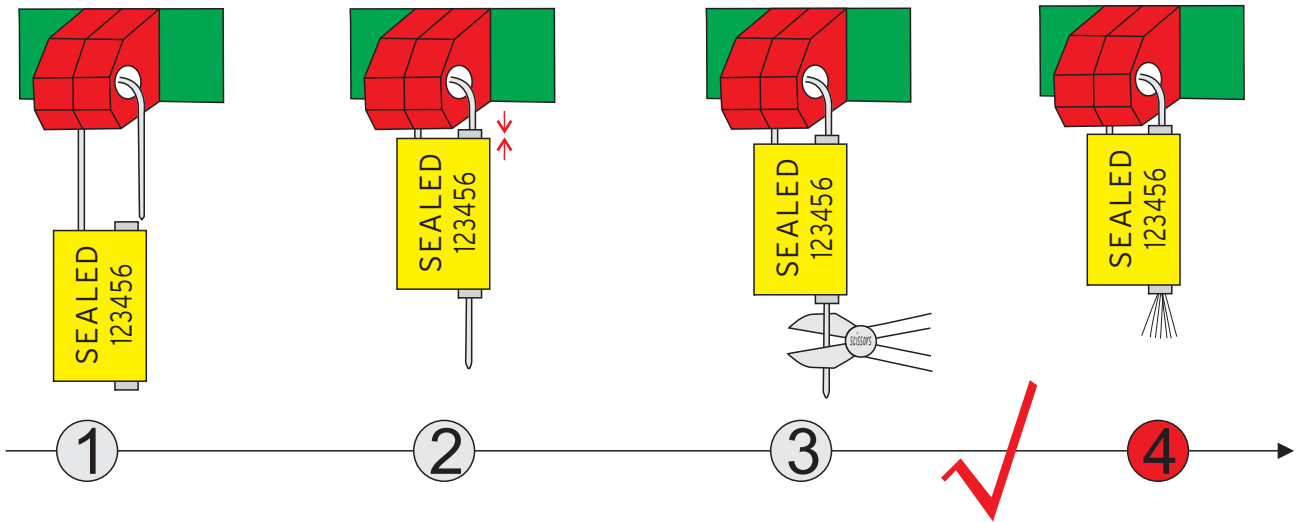
- Laser engraving
- Company Logo/Name; Sequential number
- The readable bar code is available



Pull-Tight Plastic Cable Seal

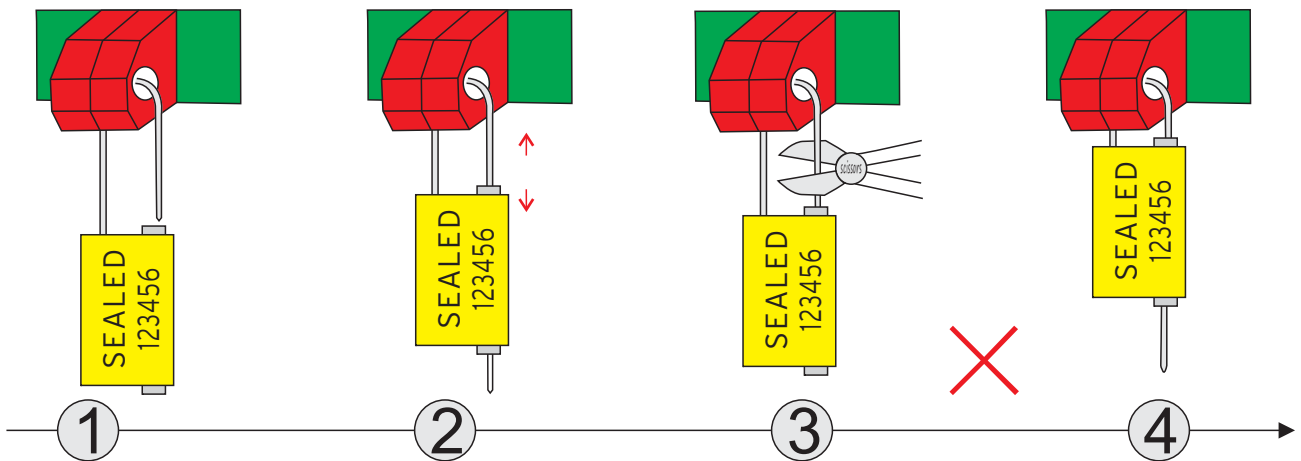
MODEL NUMBER: OS6105

The correct user guide



- ① Ready to seal it.
- ② Pull tight the wire very near to the lock chamber.
- ③ Cut the wire.
- ④ Because it is NPC wire, after cutting the wire, The wire scatter by itself.

The wire is NOT NPC wire OR the wire is covered with plastic. There is re-seal risk .

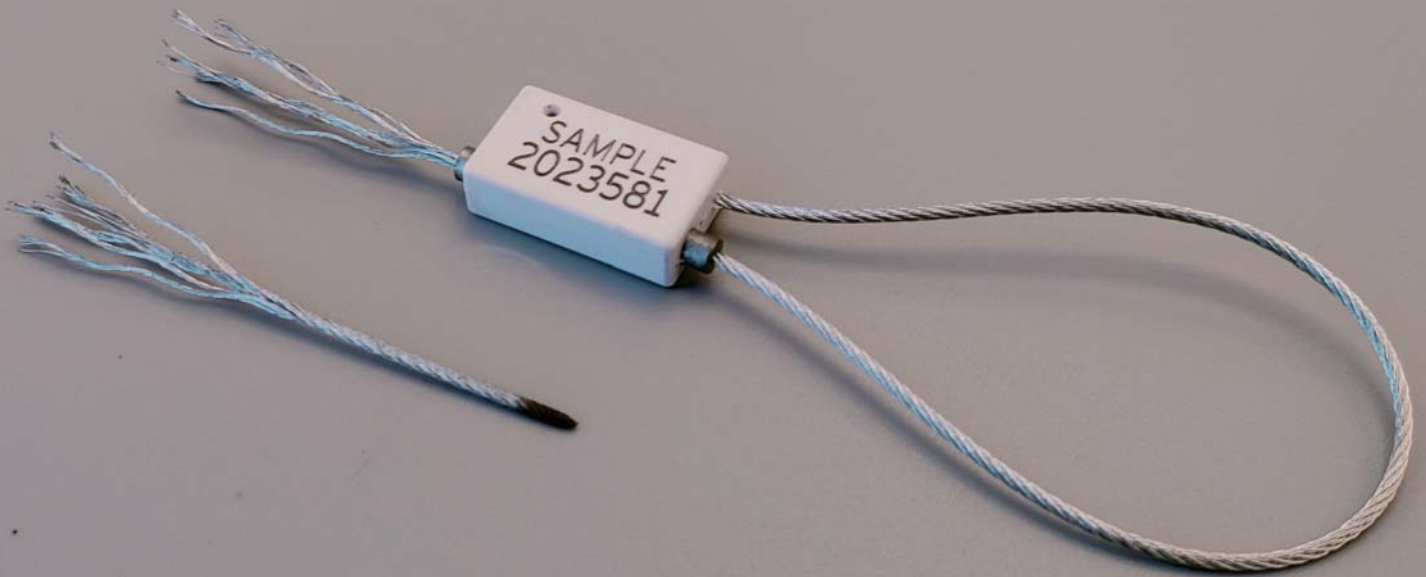


- ① Ready to seal it.
- ② NOT pull tight the wire very near to the lock chamber.
- ③ Cut the wire.
- ④ **Re-seal it.**



Pull-Tight Plastic Cable Seal

MODEL NUMBER: OS6105



Package

- 1000pcs per carton
- Net weight: 11.5kgs
- Gross weight: 12.5kgs
- Measure: 350*260*170mm

